

Basic Internet Setup



Basic Internet and Network Setup

People use the Internet everyday to communicate with friends and family, gather information, find entertainment and do much more. And connecting to the Internet has never been easier. In most cases, you can connect in minutes.

If you connect to the Internet from more than one place you'll find that Mac OS X lets you move from one network to another seamlessly, with no additional configuration.

Basic Internet Setup



What You Need To Get Started

Most home users need only two things to get connected to the Internet—an Internet Service Provider (ISP) and a way to connect to the ISP.

There are several different ways to connect with your Internet Service Provider. In most cases, you'll connect using a dial-up connection, DSL or Cable.

Basic Internet Setup



Understanding How Your Internet Connection Works

Whether you connect to the Internet through a dial-up connection, DSL, or cable, understanding what happens when you connect can help you set up your connection, and save time when you have to call your ISP for technical support.

On your Mac you go to one place to configure your computer. The Network pane of System Preferences stores all your network related settings.

Basic Internet Setup



Connecting to the Internet Using Broadband

Broadband connections to the Internet have become more popular and affordable than ever. DSL and cable offer higher speed connections than dial-up, and also allow you to connect to the Internet without tying up your telephone line, or getting a second line just for Internet access.

With Mac OS X it's easy to connect to the Internet through a broadband connection. In most cases your ISP will provide you with a modem, so all you have to do is connect it to your Mac and telephone or cable jack. With most broadband connections to the Internet, you're always connected, so there is no waiting.

Basic Internet Setup

Service Provider:

Account Name:

Password:

Telephone Number:

Alternate Number:

☒ Save password
Checking this box will allow your computer to remember your password for future logins.

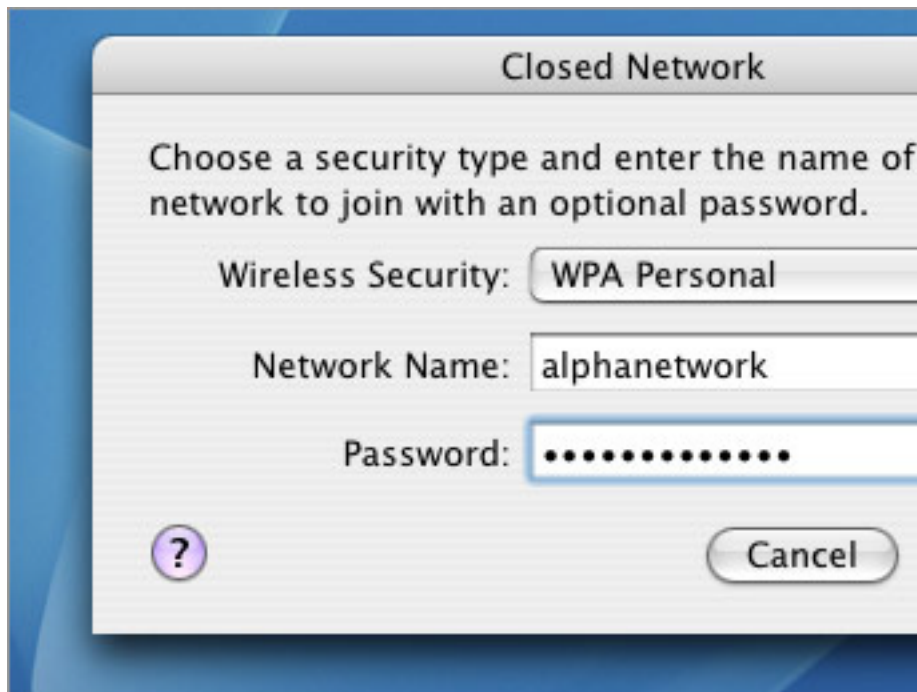
PPP Options...

Accessing the Internet through a Dial Up Account

Using a dial-up account is a good and inexpensive way to connect to the Internet if you primarily just check email and do some light web browsing. Dial-up accounts are also great if you travel a lot, since most ISPs have access numbers throughout the country.

If you use a dial-up account to access the Internet you'll find that configuring your Mac to connect is easy. In most cases, all you need to do is enter your user name, password and the phone number(s) provided by your ISP. Once set up, you'll connect to the Internet after your computer calls your ISP, connects to their computers and verifies your account.

Basic Internet Setup

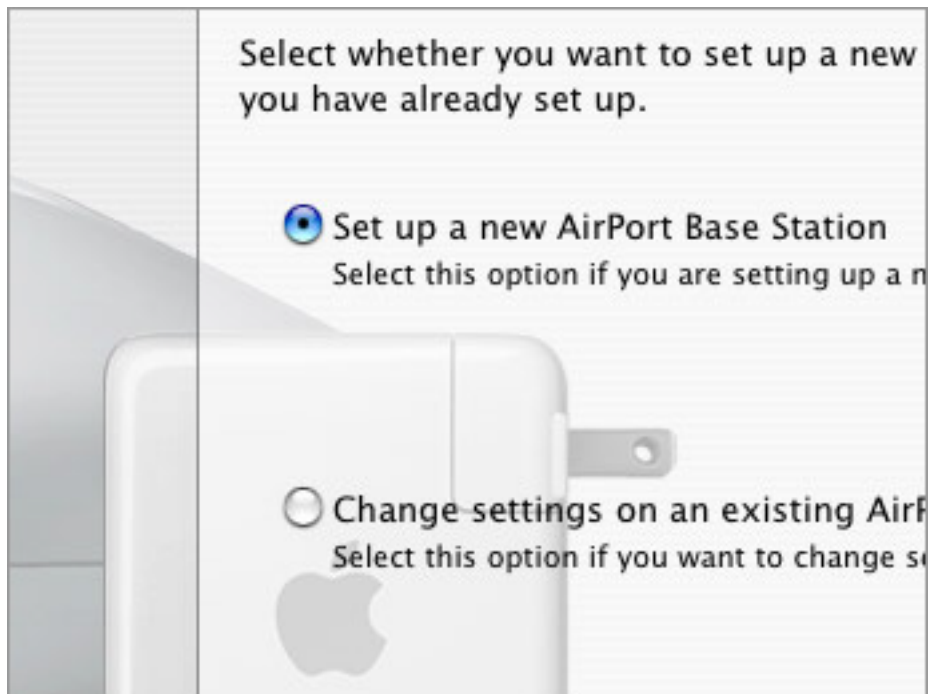


Connecting to the Internet Through an Existing Network

If you use your computer at work, school, or at your local coffee shop chances are you connect to the Internet through an existing network. In some cases you'll connect an Ethernet cable from your Mac to an outlet in the wall, and in other cases you'll connect wirelessly to the network via AirPort (also known as WiFi).

When you connect to the Internet through an existing network, the organization in charge of that network becomes your ISP. Often, connecting to the network will be automatic, however, most of the time you'll have to get some configuration information, or a user name and password to connect to the network.

Basic Internet Setup

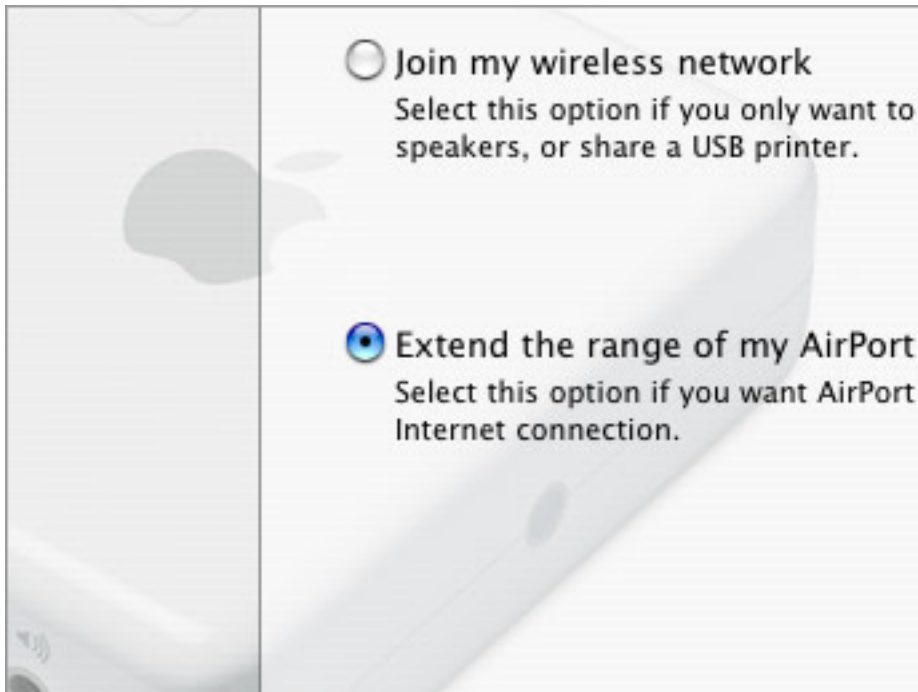


Setting Up Your Own Wireless Network

With a wireless network you can use your Mac in the kitchen, bedroom, or even on your back patio. Depending on which AirPort base station you have you can use a wireless network with your DSL, cable, or dial-up account, with almost no setup.

If you have already set up your Mac to connect to your ISP, you can use the AirPort Setup assistant to copy your Internet settings from your Mac to the AirPort Base Station.

Basic Internet Setup

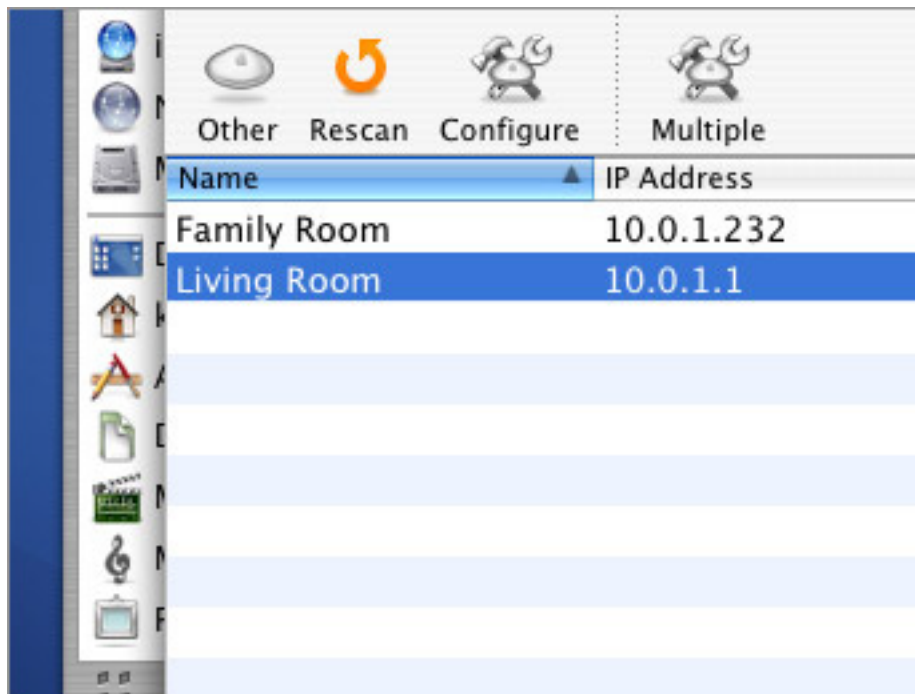


Extending the Range of a Wireless Network

Extending the range of your wireless network is a great way of keeping multiple computers connected to your network over a large area. You can extend the range of your network by adjusting settings of your base station, adding an antenna, or adding an additional AirPort Express or AirPort Extreme base station.

Depending on how far, or in some cases what direction, you want to extend your network you might only need to make adjustments to the configuration of your base station. In most cases the best way of extending a wireless network will involve adding an antenna or a second or third base station.

Basic Internet Setup



Advanced AirPort Configuration Using the AirPort Admin

The AirPort Setup Assistant and AirPort Express Assistant are great for setting up a base station. But, if you need to make changes after setup, the AirPort Admin Utility lets you make very specific changes that the assistant won't.

If you want to restrict access to your base station and Internet connection, change the base station's frequency, or change the type of wireless security you're using on your network, the AirPort Admin Utility is the right tool. With the AirPort Admin Utility you can administer AirPort, AirPort Extreme and AirPort Express base stations from one interface.

Basic Internet Setup



What's Next

Congratulations! You've completed the tutorial. Hopefully, You've learned more about how to connect to the Internet with your Mac. Let us know what you thought of this tutorial by giving us your feedback.

Provide feedback or request a topic
Return to the Support Mac OS X page